

NXCM GAS MODULE

Next Generation Cellular AMI Gas Module V5.0

Solutions for advanced Gas AMI Utilities.
With the cellular direct connect capabilities of the NXCM Gas 5.0 module, the utility can deploy modules faster, without the need for communications infrastructure, obtain more precise billing data, monitor multiple devices in the Gas utility system for system management.

FEATURES AND BENEFITS

STYLES FOR ALL METER TYPES

Reduce inventory and streamlined installation. Available in Remote and Retrofit integral mount form factors. The Smart Gas module is compatible with all major brands of Gas meters.

FLEXIBILITY

- Eliminates the need for installation and maintenance of the communications infrastructure. Simply install the NXCM and it will directly connect to the Netsense network MDC.
- Account information is captured at the time of installation, allowing the installer to quickly deploy the module in the field without having to match up the correct unit to the address.
- Remote mounting options allow units to be wall- or pipe-mounted with up to 100 feet (30 meters) of wire. Integral-mounted modules can be installed on all major gas meters, both residential and C&I using the existing index on the meter. The module is programmed with the existing index reading at installation so that the radio reading matches the index reading.
- Using the time signals obtained from the cellular network with each communication the Gas meter intervals are synchronized with real time, giving the utility an accurate view of data simply not possible with devices that merely bubble-up at various, uncoordinated times.

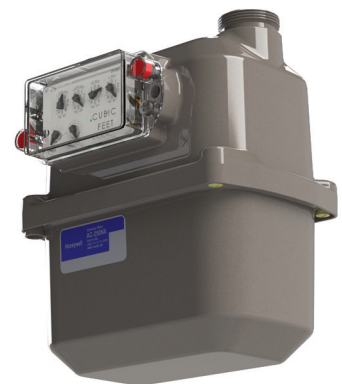
SECURITY

Secure by design as with other network elements within the System, the Smart module has security built in and not patched on.

Supporting AES-128 bit encryption, the Smart Gas module protects its data and communications with enterprise strength technology.



Remote-mount NXCM Gas module.



Integral mount retrofit NXCM Gas module.

OVER THE AIR SECURE UPGRADES

To ensure secure upgrades, the Smart uses advanced techniques when implementing over-the-air (OTA) upgrades of its firmware. When the OTA process is complete and verified, the Smart Gas module will automatically resume operation as it was programmed to do prior to the upgrade.

GAS METER COMPATIBILITY

Fully compatible with all major gas meters including Honeywell American Meter, Itron(Actaris) and Sensus(Rockwell).

SMART GAS MODULE 4.0 SPECIFICATIONS

- Compliant with FCC Rules, Part 15
- Temperature range of -40 °C to +65 °C
- Meets IP67 Requirements for dust and water resistance.

For more information

SmartEnergy@Honeywell.com
800-786-2215 (Honeywell Smart Energy sales information)
866-554-9007 (Product support)

Honeywell Smart Energy

208 S. Rogers Lane Raleigh, NC 27610
www.HoneywellSmartEnergy.com
www.honeywell.com

DS-20-08-ENG | 11/20
© 2020 Honeywell International Inc.

**THE
FUTURE
IS
WHAT
WE
MAKE IT**

Honeywell