

S110 Surface mounted meter ER

Connectable –
with e^{sens} communication interface

- Single-jet meter dry dial ER
- Ultra-reliable interface for communication modules
- Cold water up to 30 °C, hot water up to 90 °C
- Nominal flow rate Q_3 2.5 and 4
- Meter length 115, 130 mm



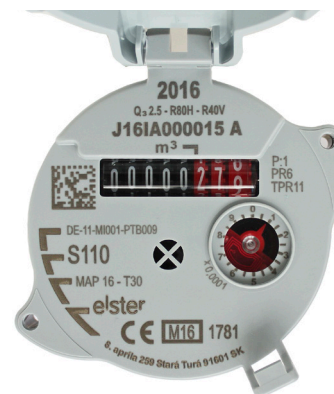
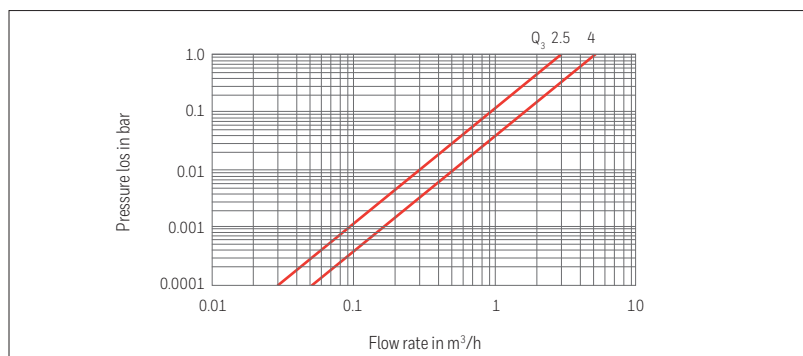
EU-type examination certification
DE-11-MI001-PTB009

Meter type		ER		
Meter size / Continuous flow rate	Q_3	m ³ /h	2.5	4
Nominal size	DN	mm	15	20
		inches	1/2	3/4
Meter length		mm	115	130
Meter connection thread		inches	G 3/4 B	G 1 B

Performance characteristics

Overload flow rate	Q_4	m ³ /h	3.125	5
Transitional flow rate	Q_2	l/h	50	80
Minimum flow rate	Q_1	l/h	31.25	50
Starting flow		l/h	7	10
Measuring range (MID)	Q_3/Q_1	H/V	R 80H; R 40V	
Continuous load	Q_3	l/h	2,500	4,000
Temperature class	MAT	°C	30; 30/90	
Pressure rating	MAP	bar	16	
Flow capacity at 1 bar pressure loss		m ³ /h	3.3	5.2
Mechanical class			M1	
Min. straight length of inlet/outlet			U0/D0	
Climatic ambient conditions		°C	5 to 70	
Protection class	IP		54	
Accuracy cold water			±2%/±5%	
Accuracy hot water			±3%/±5%	
Magnetic protection			EN 14154-3	

S110 Surface mounted meter ER Technical Data



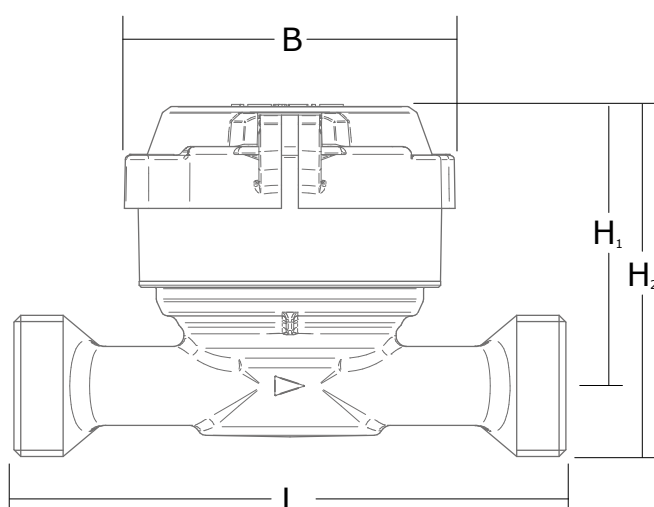
Meter type	ER			
Meter size / Continuous flow	Q ₃	m ³ /h	2.5	4

Dimensions				
Meter connection thread	inches	G 3/4 B		G 1 B
L Length	mm	115		130
B Width	mm	78		
H ₁ Centerline height	mm	80		83
H ₂ Overall height	mm	93.2		99.6
Weight	kg	0.38		0.45

Retrofittable communication modules eSens	
Pulse	Falcon PR6
Radio (Wavenis)	TPR11
Mbus	Falcon PR6M
wMBus	Merlin 868 wMBus
	Merlin 169 wMBus

Dimensional drawing

ER



For further information visit:
www.elstermetering.com

ELSTER Messtechnik GmbH
 Otto-Hahn-Ring 2-4
 64653 Lorsch, Germany
 T +49 6251 59301 0
 F +49 6251 59301 81
 E vertrieb.wasser@honeywell.com



S110 D 02.33e / 03.17
 Contents subject to change without notice

Honeywell
 THE POWER OF **CONNECTED**